

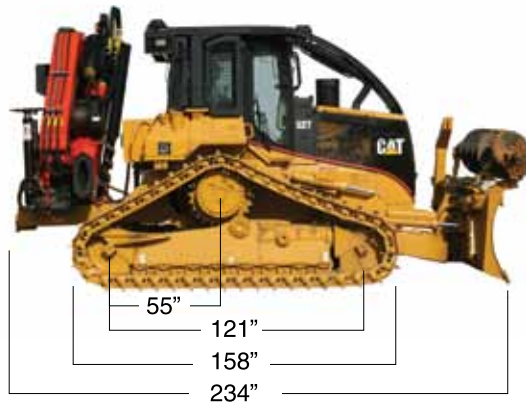


Revolutionizing the Utility Industry

For more information about the Linetrac 830G, go to www.linetracinc.com/specs

Specifications **Linetrac 830G**

Front, Back and Side Views



Features

- **CAT tractor** with 30" tracks and 8 roller under carriage
- **Palfinger specially designed crane**
- Hydraulically operated crane outriggers
- 30 gallon water system
- Pole cradle
- Auger bit
- Two speed hydraulic auger motor
- Auger mount on blade for transport
- 20,000 pound electric winch with 0.50 line
- Pole tamp

- Rear view video camera
- Wireless remote control auger crane operation
- Wireless remote tractor engine start and shutoff

Dimensions

Length	19' 6"
Width	10' 9"
Height	11' 6"
Weight	57,600 lbs
Ground Pressure	less than 8.0 psi

Design features and specifications are subject to change without notice.



Revolutionizing the Utility Industry

For more information about the Caterpillar 527, go to www.linetracinc.com/specs

Specifications Caterpillar 527

(8 roller undercarriage and 30" track)

Engine

Four stroke cycle, four cylinder 3304 DITA diesel engine

Ratings at 2200 rpm*	kW	Hp
Gross power	124	166
Net power	112	15

The following ratings apply at 2200 RPM when tested under the specified standard conditions for the specified standard:

Net power	kW	Hp
Caterpillar	112	150
ISO 9249	112	150
SAE J1349	113	152
80/1269EEC	112	150

* Power Rating Conditions

- Based on standard air conditions of 25°C (77°F) and 99kPa (29.32' Hg.) dry barometer
- Used 35°API gravity fuel having a LHV of 42 780 kJ/kg (18,390 Btu/lb) when used at 30°C (86°F) [ref. a fuel density of 838.9g/L (7.001 lb/U.S. gal)]
- Net power advertised is the power available at the flywheel when the engine is equipped with fan, alternator, air cleaner, and muffler
- No derating required up to 2286m (7500 ft) altitude

Features

- Cam-tuned and tapered, cast aluminum-alloy pistons have three rings and are cooled by oil spray
- Steel backed, cooper-bonded crankshaft bearings
- Hardened crankshaft journals
- Dry-type air cleaners with primary and secondary elements
- Exclusive centrifugal pre-cleaner
- 24-volt electric starting system with 75-amp alternator and two 700 CCA-batteries

RPOS/FOPS

ROPS/FOPS canopy is standard.

Features

- ROPS (Rollover Protective Structure) offered by caterpillar for the machine meets ROPS criteria SAE J395, SAE J1040 APR88, ISO 3471-1: 1986, ISO 3471: 1994
- FOPS (Falling Object Protective Structure) meets FOPS criteria SAE J231 JAN81 and ISO 3449 1992 LEVEL II

Steering and Braking

Brakes meet SAE J1026 APR90

Lever Steering Features

- Hand-lever steering/braking controls
- Oil-cooled, hydraulically actuated multiple-disc steering clutches and brakes
- Single brake pedal brakes both tracks without disengaging steering clutches
- Mechanically actuated, spring applied parking brake

Electrical System (24-volt)

Features

- Two, 12-volt maintenance-free batteries
- 75-amp alternator
- Wiring harness wrapped with braided, vinyl-coated nylon shielding for maximum protection
- Connections are self-sealing, yet still allow easy service access

Service Refill

	L	U.S. Gallons
Fuel tank	285	75
Cooling system	23	6.1
Crankcase	22	5.8
Transmission and torque converter	148	39.0
Final drives	7	1.8
Hydraulic tank	40	10.6

Design features and specifications are subject to change without notice.



Revolutionizing the Utility Industry

For more information about the Caterpillar 527, go to www.linetracinc.com/specs

Specifications Caterpillar 527

(8 roller undercarriage and 30" track)

Operator Station

ROPS/FOPS canopy is standard.

Features

- Enclosed cab and open canopy with screens meets operator protective structure for forestry equipment SAE J1084 APR80
- Single lever dozer control allows for easy dozer operation
- Power shift transmission allows for effortless and precise shifting

Pivot Shaft and Equalizer Bar

Pivot shaft and pinned equalizer bar oscillation system

Features

- Pivot shaft transmits ground impact loads directly to main frame
- Protects power train components
- Pinned equalizer bar keeps track roller frame in proper alignment
- System provides smooth machine underside
- Helps prevent collection of mud and debris

Weight (approximate)

Operating weight includes: enclosed cab, 5 PAT blade, full fuel tank, Palfinger PK 29002G crane, water system, auger bit and 30" (760 mm) tri-link track

Operating weight 57,600 lbs

Final Drive

Single reduction final drives

Features

- Isolated from ground-impact and blade induced loads
- Modular design reduces removal and isolation time
- Segmented sprocket simplifies replacement

Hydraulic Controls Load sensing, variable displacement piston pump.

Max. Pump capacity of 111 lpm at 20 690 kPa/207 bar/3000psi

At rpm rated engine speed of	2200	
Tilt cylinder flow	60 liters/min	15.8 gpm
Angle cylinder flow	111 liters/min	29.3 gpm
Lift cylinder flow	111 liters/min	29.3 gpm
Maximum system pressure	20 690 kPa/207 bar	3000 psi
Implement circuit pressures		
Bulldozer lift	20 690 kPa/207 bar	3000 psi
Bulldozer angle	20 690 kPa/207 bar	3000 psi
Bulldozer tilt	20 690 kPa/207 bar	3000 psi
Drive	Geared from engine flywheel	

Transmission Caterpillar three-speed power shift design with heavy-duty torque converter

Maximum travel speed	km/h	mph
Forward	1	3.7
	2	6.6
	3	11.5
Reverse	1	4.6
	2	8.3
	3	14.6

Features

- Planetary gear sets within transmission provides additional torque multiplication
- No clutching required to change gears
- Gear selection is quick and accurate
- Power shift transmission and torque converter reduce the need for gear changing and better match drawbar pull to ground conditions.

Design features and specifications are subject to change without notice.



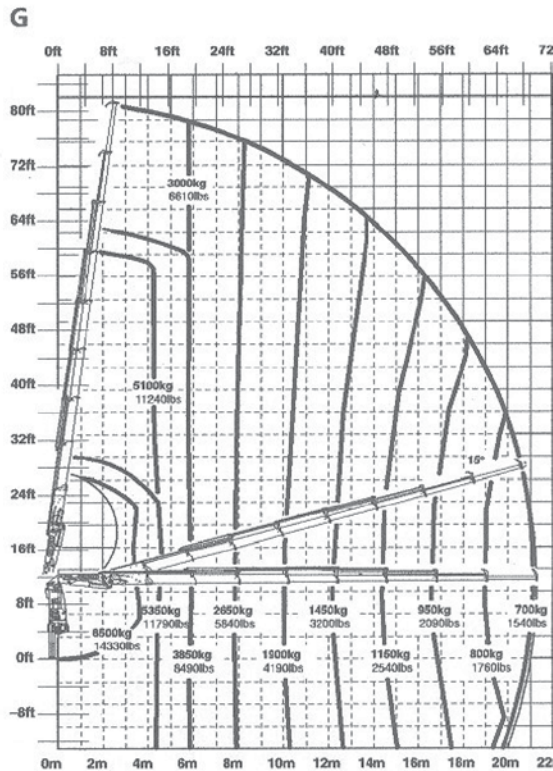
Revolutionizing the Utility Industry

For more information about the Palfinger PK 209902 G Performance crane, go to www.linetracinc.com/specs

Specifications **Palfinger PK29002G Crane**

Standard crane

Slewing torque	3.3 m/32.4kNm	23890 ft. lbs
Outreach	8.1 m	26' 7"
Stabilizer spread standard	5.6m	18' 4"
Stabilizer spread max.	6.6 m	21' 8"
Fitting space required	0.96 m	3' 2"
Width folded	2.5	8' 2"
Max. operating pressure	330 bar	4785 psi
Recommended pump capacity with radio remote control and LS-System	From 80 l/min 17.6 imp. Gal/min 21.1 US gal/min to 100 l/min 22.0 imp. gal/min 26.4US gal/min	
Dead weight standard crane	2847 kg	6280 lbs



Max. lifting capacities 6500 kg/14330 lbs

Outreach		Capacity	
Hydraulic			
4.6 m	15' 1"	5360 kg	11820 lbs
6.0 m	19' 11"	3830 kg	8440 lbs
7.9 m	25' 11"	1660 kg	5860 lbs
10.1 m	33' 2"	1890 kg	4170 lbs
12.2 m	40' 0"	1430 kg	3150 lbs
14.4 m	47' 3"	1140 kg	2510 lbs
16.7 m	54' 9"	940 kg	2070 lbs
18.9 m	62' 0"	800kg	1760 lbs
21.1 m	69' 3"	710 kg	1570 lbs
Manual			
23.1 m	75' 9"	570 kg	1260 lbs

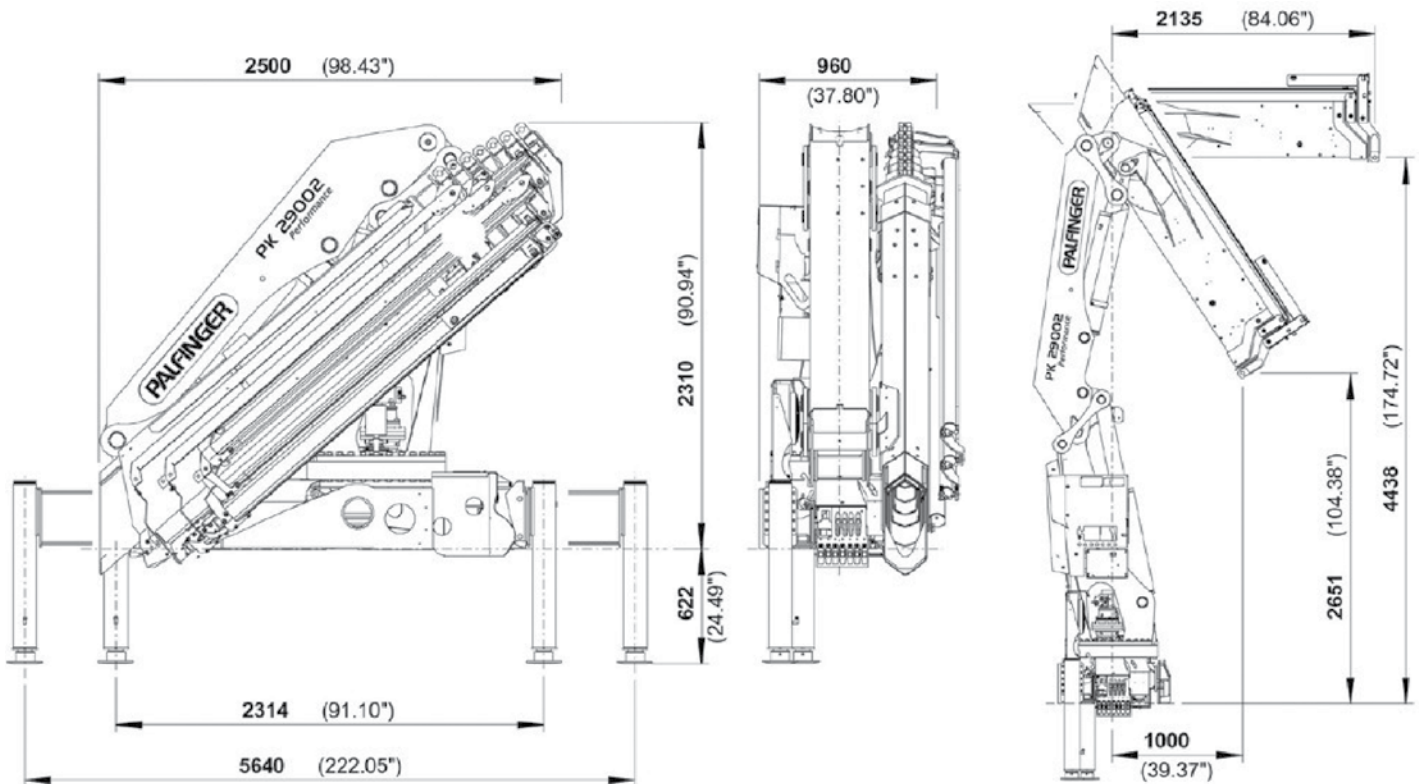
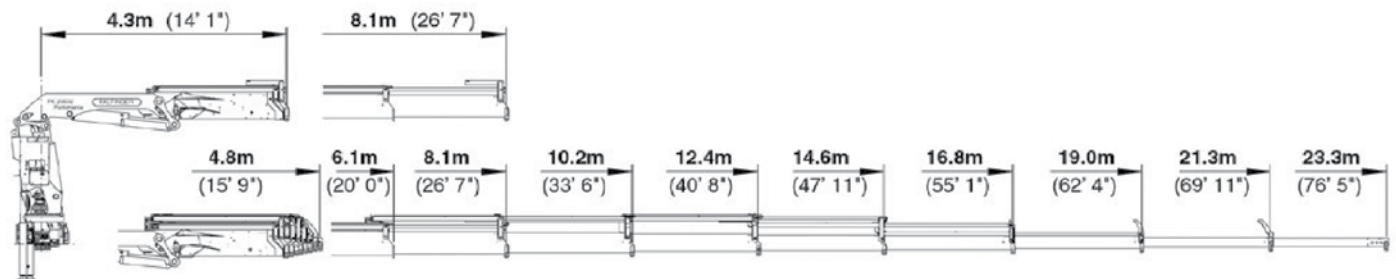
Design features and specifications are subject to change without notice.



Revolutionizing the Utility Industry

For more information about the Palfinger PK 209902 G Performance crane, go to www.linetracinc.com/specs

Specifications Palfinger PK29002G Crane



Design features and specifications are subject to change without notice.